

**Capistrano Unified School
District
4th Grade
Beginning Strings
-Cello-
2025-2026 Edition**

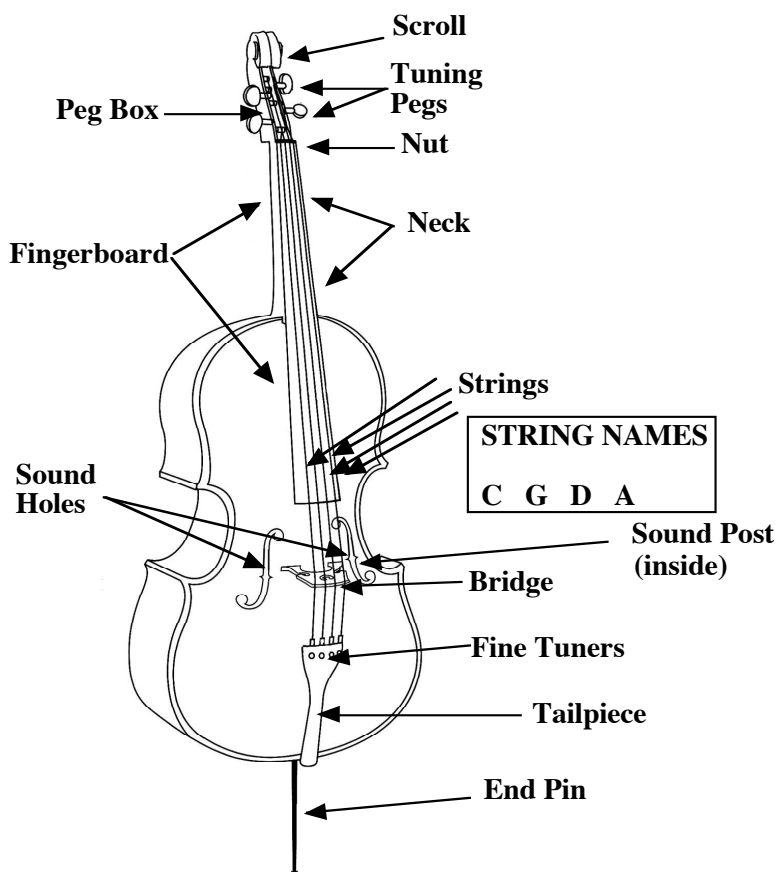


With input and materials from: Steve Benefield, Michelle Brunton, Penni Buff, Chad Cunningham, Lisa Gray, Andrea Howard, Bill Hunker, Ann Ludwig, Barbara Scholl, Rob Stirling, Maryann Tucker, and Kory Wentzel.

Name: _____ **School:** _____

Classroom Teacher: _____

Parts of the Cello



Taking Care of Your Cello

Handle With Care! Your instrument is made of breakable wooden parts, so repairs can be expensive and time consuming.

Do not let anyone play your instrument unless it is your teacher or an experienced player you trust.

Always take the bow out first. Before taking your cello out, take the bow out of the pocket of the case.

Keep your instrument clean! After playing, wipe off the rosin dust, smudges, fingerprints, etc., with a soft clean cloth. Always wash your hands before playing your instrument.

Do not let your instrument get too hot or too cold. If the temperature is uncomfortable for you, it is also bad for your instrument. For example, never leave your instrument in a car on a hot or cold day.

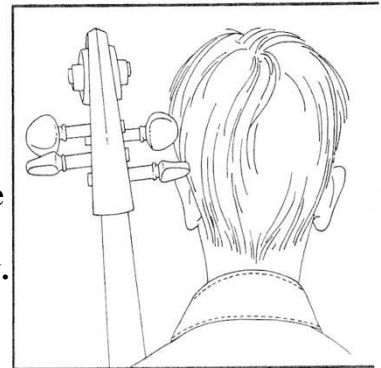
Allow only an experienced repair person to fix your instrument.

Make sure your bridge is lined up correctly and standing straight at all times. If it gets out of place, ask your teacher to fix it for you.



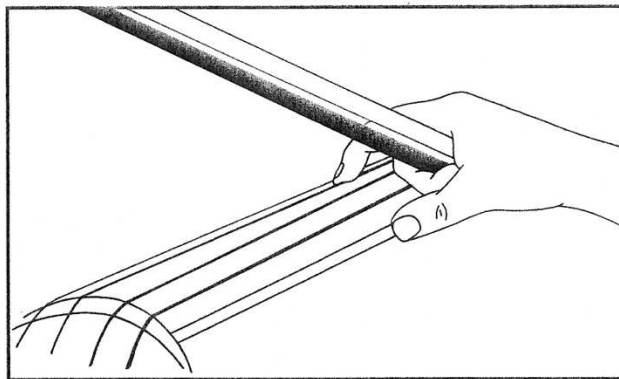
Lesson One: Getting Started Holding your Cello

1. Pull the end pin out far enough to make the scroll of the cello at least as high as your chin when you are standing
2. Sit “tall” on the front edge of your chair with your knees bent and your left foot slightly forward. If you are sitting correctly, you can stand up quickly and easily.
3. While holding your cello straight up and down, and at arm’s length, center the end pin in front of you.
4. Bring your cello toward you so the upper edge touches the center of your chest. The lowest peg should be touching your head behind your left ear.
5. The inside of both knees touch the sides of your cello. Do not grip the cello with your knees.
6. If your position is correct, you should be feel relaxed and balanced in your chair and to be able to move side to side easily.

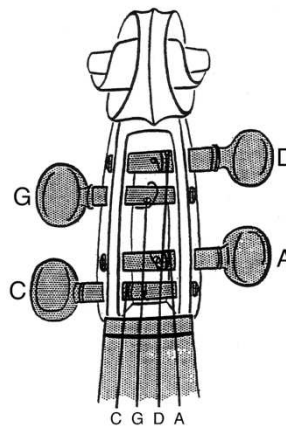


Pizzicato Position

1. Place the tip of your right thumb on the side of the fingerboard (near the corner).
2. Extend your first finger over the fingerboard and pluck the string.
3. For the best sound, make the string vibrate as much as possible.

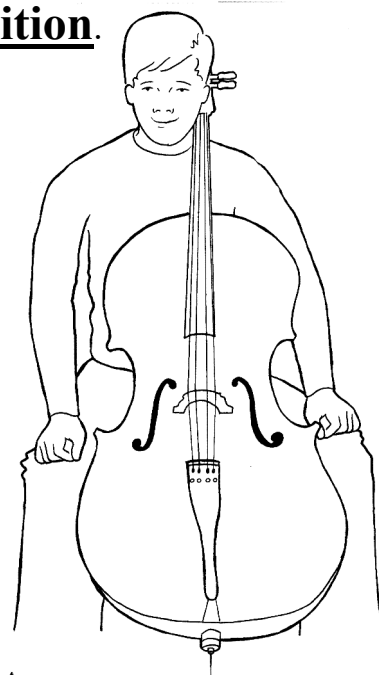


The Cello has four open strings.
 They are named from lowest to highest,
 left to right, and thick to thin. This sentence
 will help you remember which order they are in:
Cats Get Dogs Angry.



Let's Review how to hold the cello in playing position.

1. Sit tall.
2. Cello makes contact with the floor, knees, and chest
3. Check the end pin is out far enough so that the C-peg is behind your left ear
4. Give cello a hug to center it in your body
5. Left hand rests on left knee



1. Rock House

D D D D D D D D D D D D D D D D

2. Rock Hound

A A A A A A A A A A A A A A A A

3. Rock Tango

D D A A D D A A A A D D A A D D

4. The Twist

G G D D G G D D A A D D G G G G

5. Lazy Afternoon

G G D D A A D D G G D D A A G G

6. Skip to My Lou

D D D D A A A A D D D D A A D D

7. Mary Had a Little Lamb

DDDD DDDD AAAA DDDD

DDDD DDDD AAAA D - D -

8. Cycle of Strings

⏏ = Quarter Rest (one beat of silence)

EEEE AAAA DDDD GGGG ⏏ ⏏ ⏏ ⏏
 ⏏ ⏏ ⏏ ⏏ GGGG DDDD AAAA EEEE

*Pencil Fun- Do You Remember the Parts of the Cello?

1. _____

2. _____

3. _____

4. _____

5. _____

6. _____

7. _____

8. _____

9. _____
(inside)

10. _____

11. _____

12. _____

13. _____

1. _____

2. _____

3. _____

4. _____

5. _____

6. _____

7. _____

8. _____

9. _____

10. _____

11. _____

12. _____

13. _____

STRING NAMES

Lesson Two: Whole, Half, and Quarter Note Rhythms

Time signatures appear at the beginning of a piece of music. They are made up of two numbers.



The top number indicates the number of beats per measure.

The bottom number indicates which note will get one beat.

In $\frac{4}{4}$ time there are four beats in each measure.

A **quarter note** (♩) = 1 beat

A **half note** (♮) = 2 beats

A **whole note** (♯) = 4 beats

1. Clap the rhythm while counting the beats out loud.

$\frac{4}{4}$ ♩ ♩ ♩ ♩ | ♯ | ♩ ♩ | ♩ ♩ ♩ ♩ | ♩ ♩ ♩ | ♯ |

1 2 3 4 1 2 3 4 1 2 3 4 1 2 3 4 1 2 3 4 1 2 3 4

2. Write the count below the notes and then clap the rhythm while counting the beats out loud.

$\frac{4}{4}$ ♩ ♩ ♩ ♩ | ♩ ♩ ♩ | ♩ ♩ ♩ | ♩ ♩ ♩ ♩ | ♩ ♩ | ♯ |

Rests are used in music to indicate silence.

A **quarter rest** (⏏) = 1 beat

A **half rest** (▬) = 2 beats

A **whole rest** (▬) = 4 beats

1 2 3 4 1 2 3 4 1 2 3 4

3. Write the count below the rests.

$\frac{4}{4}$ ⏏ ⏏ ⏏ ⏏ | ▬ | ▬ ▬ | ⏏ ⏏ ⏏ ⏏ | ▬ ⏏ ⏏ | ▬ |

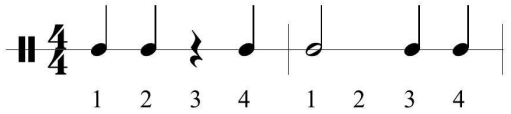
4. Write the count below the notes and rests, then clap and count the rhythm out loud.

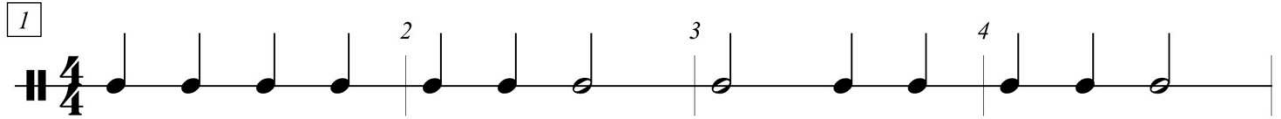
$\frac{4}{4}$ ♩ ♩ ▬ | ⏏ ⏏ ♩ ♩ | ♩ ▬ | ▬ | ♩ ♩ ♩ ⏏ | ⏏ ♩ ♩ |

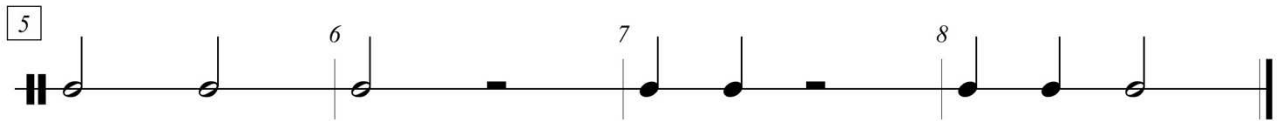
Rhythm Clap and Count #1

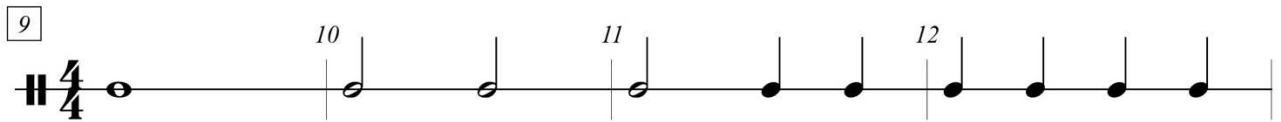
Write the count below the notes and rests.

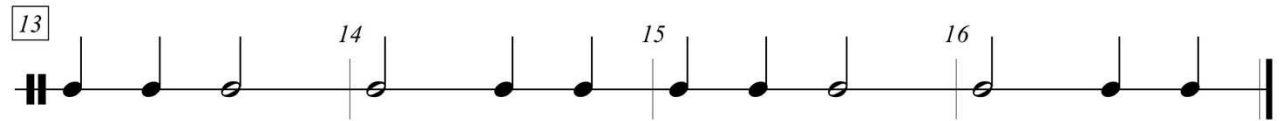
Clap the rhythms while counting out loud.

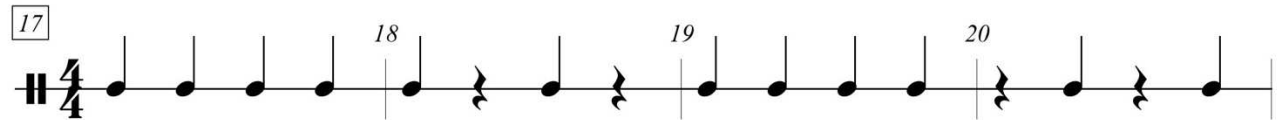
Example 

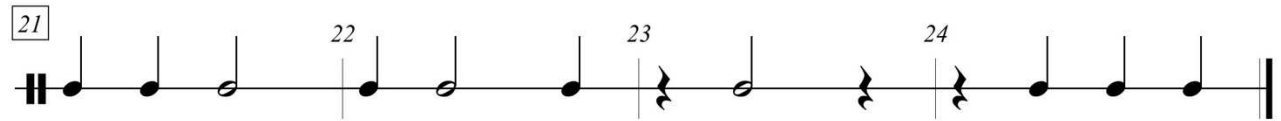
1 

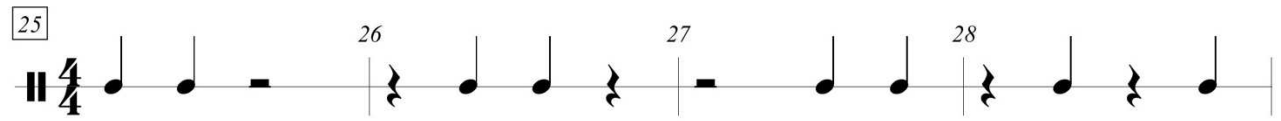
5 

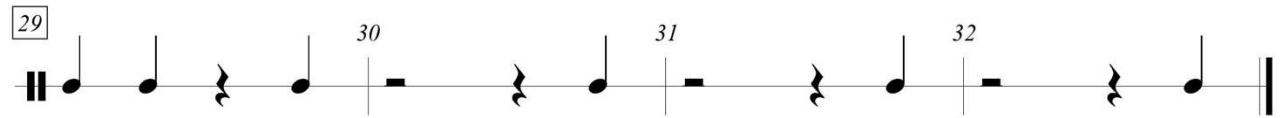
9 

13 

17 



21 

25 

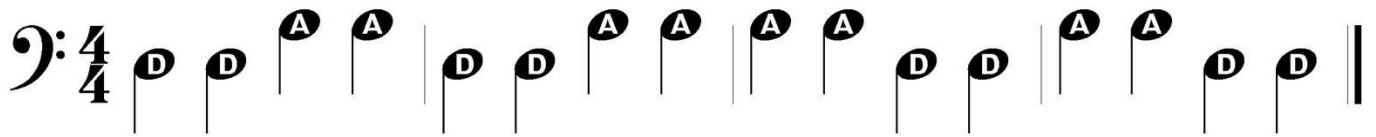
29 

Lesson Three: Open Strings

Music Symbols

 = Bass Clef	 = Time Signature	how many beats in each measure
		which note gets one beat
	= Bar Line (divides the music into sections called "measures")	
	= Double Bar (the end of the song)	
z	= Quarter Rest (one beat of silence)	
—	= Half Rest (two beats of silence)	
○	= Whole Note (receives four beats)	
∩	= Half Note (receives two beats)	
♩	= Quarter Note (receives one beat)	

9. Teeter Totter



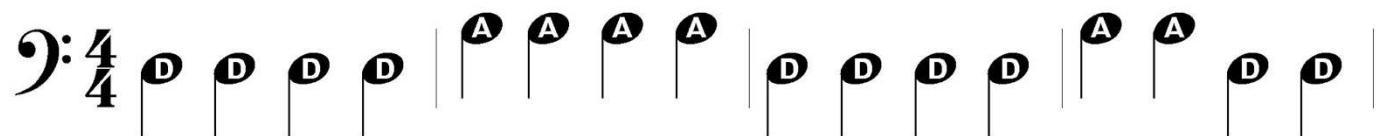
10. Bullfrog



11. Crossing the Strings



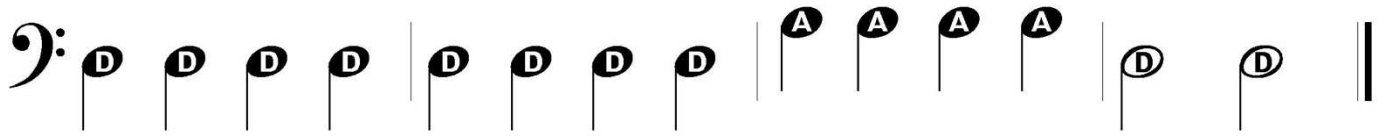
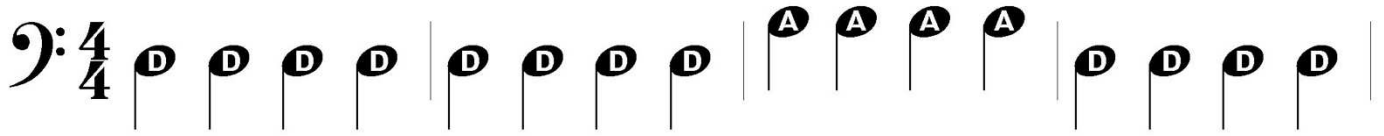
12. Skip to my Lou



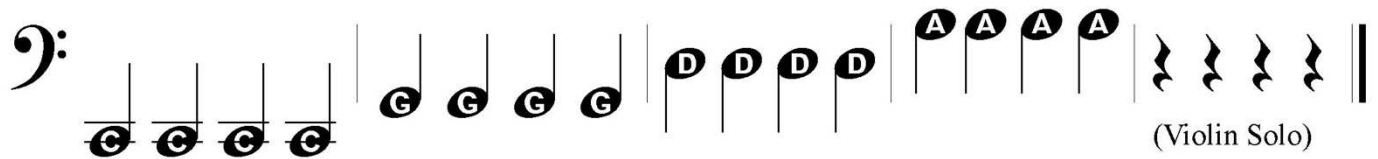
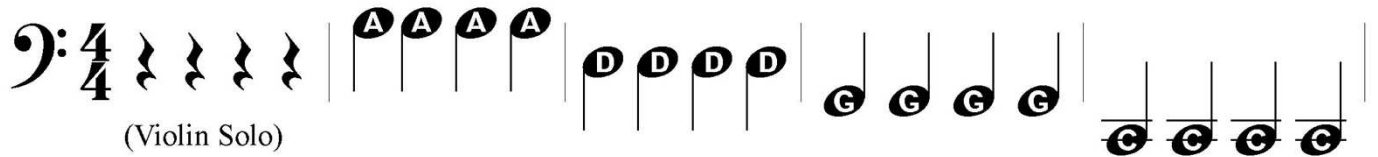


Lesson Three: More Open Strings

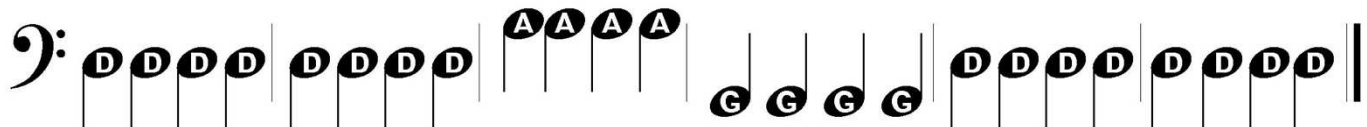
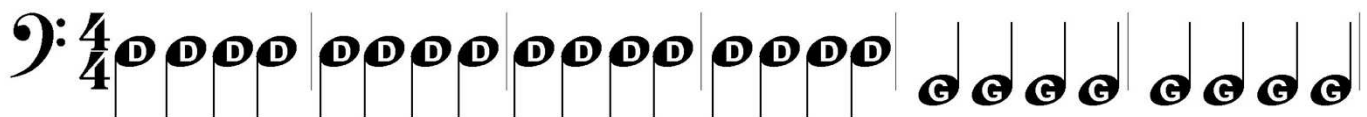
13. Mary Had a Little Lamb



14. Cycle of Strings

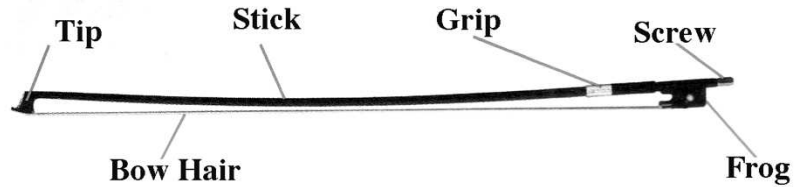


15. Open String Blues

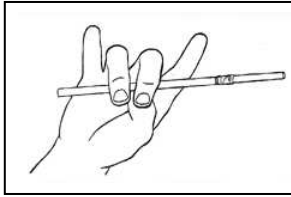


Lesson Four: Using the Bow

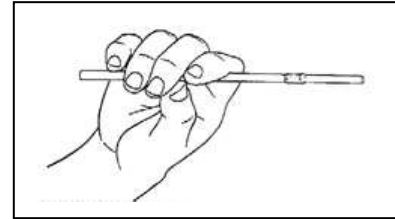
Parts of the bow



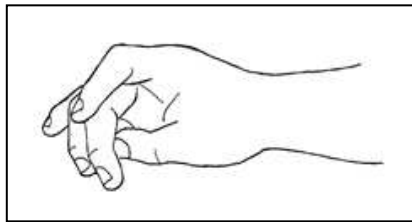
Steps to a good bow hold.....



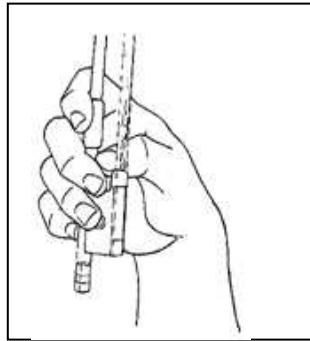
1. Middle fingers curve over the bow stick



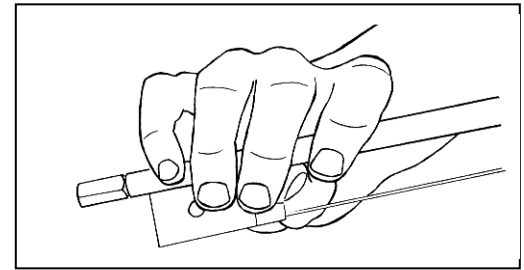
2. Thumb touches where frog meets the



3. Check for bow hand circle



4. Wrap your first finger around the stick.



5. Little finger sits on the side of the stick

At first, play in this area of your bow

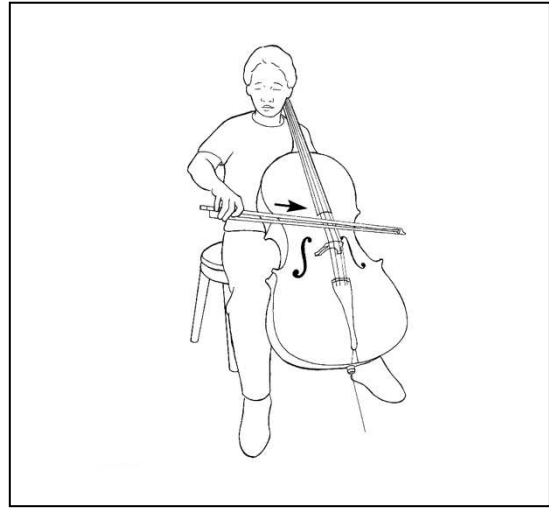
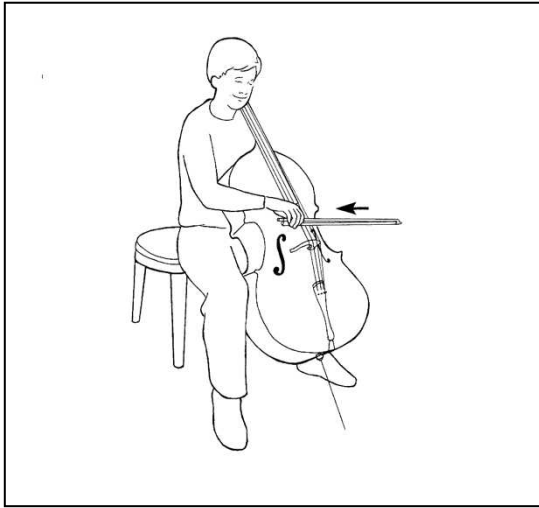


- Place your bow on the D string, halfway between the bridge and the fingerboard.
- Angle the bow so it is parallel with the bridge (your wrist should be bent upwards.)
- Pull the bow so it remains parallel to the bridge until you reach the tip. (You should need to bend your wrist the other way.)
- Move the bow and your wrist in the opposite direction.



▣ = Down bow (Pull Bow from frog to tip)

∨ = Up Bow (Push Bow from tip to frog)



****The bow alternates back and forth unless marking is placed. Orchestra bows should all move together in the same direction.**

16. Bowing on “D”

Bass clef, 4/4 time signature. A sequence of 16 quarter notes on the D string. The notes are grouped into four measures of four. Above each note is a bowing symbol: a square for down bow and an inverted triangle for up bow. The sequence of symbols is: ▣, ∨, ▣, ∨, ▣, ∨, ▣, ∨, ▣, ∨, ▣, ∨, ▣, ∨, ▣, ∨.

17. Bowing on “A” - Tilt the bow to the A String

Bass clef, 4/4 time signature. A sequence of 16 quarter notes on the A string. The notes are grouped into four measures of four. Above each note is a bowing symbol: a square for down bow and an inverted triangle for up bow. The sequence of symbols is: ▣, ∨, ▣, ∨, ▣, ∨, ▣, ∨, ▣, ∨, ▣, ∨, ▣, ∨, ▣, ∨.

18. Alternate “DNA” - Tilt the bow from the D String to the A String

Changing Strings: Your elbow is responsible for changing strings.

Bass clef, 4/4 time signature. A sequence of 16 quarter notes alternating between the D and A strings. The notes are grouped into two lines of eight. The first line has four D notes followed by four A notes. The second line has four D notes followed by four A notes. Above each note is a bowing symbol: a square for down bow and an inverted triangle for up bow. The sequence of symbols is: ▣, ∨, ▣, ∨, ▣, ∨, ▣, ∨, ▣, ∨, ▣, ∨, ▣, ∨, ▣, ∨.

Bowing on Open Strings Review

19. "D" Smooth One

Musical notation for exercise 19: "D" Smooth One. Bass clef, 4/4 time. Starts with a square bowing symbol above a D note, followed by a V-shaped bowing symbol above another D note. The exercise consists of two measures of D notes, followed by two measures of eighth notes, and ends with two measures of D notes.

20. Smooth "A"

Musical notation for exercise 20: Smooth "A". Bass clef, 4/4 time. Starts with a square bowing symbol above an A note, followed by a V-shaped bowing symbol above another A note. The exercise consists of two measures of A notes, followed by two measures of eighth notes, and ends with two measures of A notes.

21. D N A

Musical notation for exercise 21: D N A. Bass clef, 4/4 time. Starts with a square bowing symbol above a D note, followed by a V-shaped bowing symbol above another D note. The exercise consists of two measures of A notes, followed by two measures of eighth notes, and ends with two measures of D notes.

22. Teeter Totter

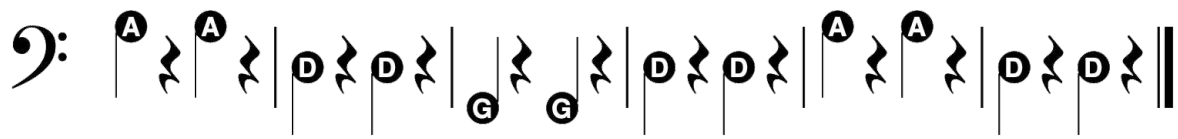
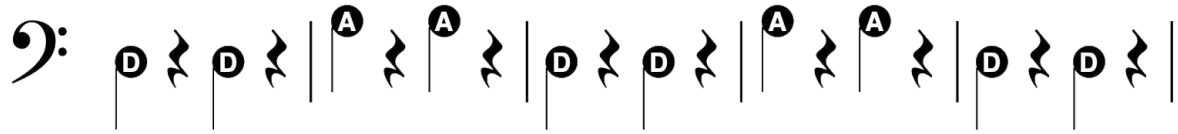
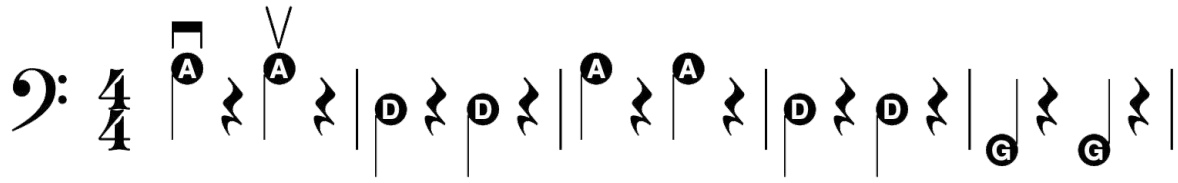
Musical notation for exercise 22: Teeter Totter. Bass clef, 4/4 time. Starts with a square bowing symbol above a D note, followed by a V-shaped bowing symbol above another D note. The exercise consists of two measures of eighth notes (A, A), followed by two measures of eighth notes (D, D), and ends with two measures of eighth notes (A, A).

23. Cycle of Strings Encore

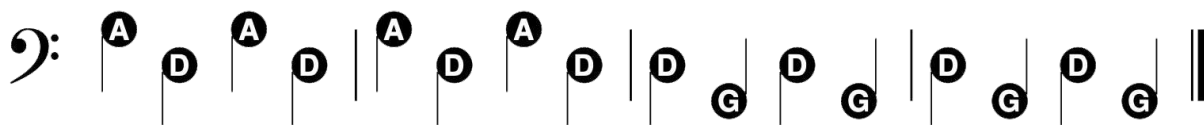
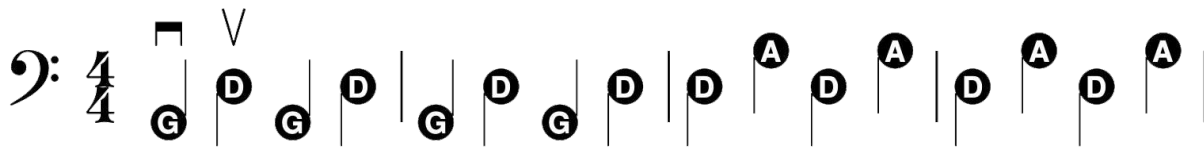
Musical notation for exercise 23: Cycle of Strings Encore. Bass clef, 4/4 time. Starts with four measures of rests, labeled "(Violin Solo)". This is followed by a square bowing symbol above an A note and a V-shaped bowing symbol above another A note. The exercise consists of two measures of eighth notes (A, A), followed by two measures of eighth notes (D, D), followed by two measures of eighth notes (G, G), and ends with two measures of eighth notes (C, C).

Musical notation for exercise 23: Cycle of Strings Encore. Bass clef, 4/4 time. Starts with two measures of eighth notes (C, C), followed by two measures of eighth notes (G, G), followed by two measures of eighth notes (D, D), followed by two measures of eighth notes (A, A), and ends with four measures of rests, labeled "(Violin Solo)". A square bowing symbol is above the first A note and a V-shaped bowing symbol is above the second A note.

24. Tetris



25. Wobbles

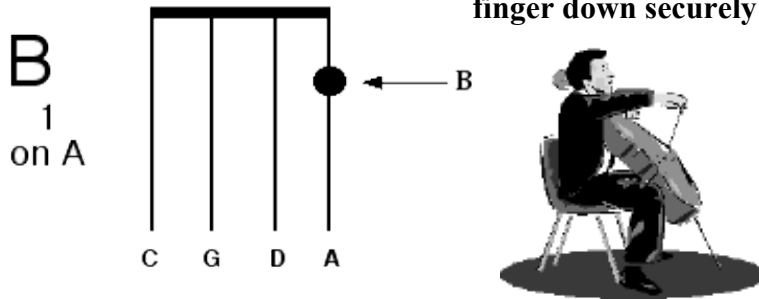


26. Happy Farmer

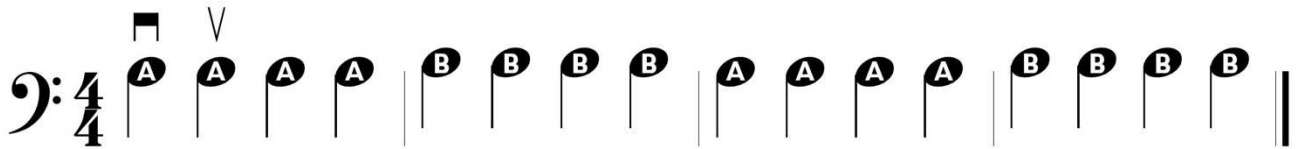
Musical score for "Happy Farmer" in bass clef, 4/4 time. The score consists of six staves. The first staff includes a 4/4 time signature, a square symbol, and a 'V' symbol. The notes are D, D, D, D, G, G, D, D, A, A, D, D, A, A. The second staff has notes D, D, D, D, G, G, D, D, A, A, D, D, A, A. The third staff has notes A, A, A, A. The fourth staff has notes D, D, D, D, G, G, D, D, A, A, D, D, G, D, D. The fifth staff has notes A, A, A, A. The sixth staff has notes D, D, D, D, G, G, D, D, A, A, D, D, G, A, D, D.

Lesson Five: "B" on the A String

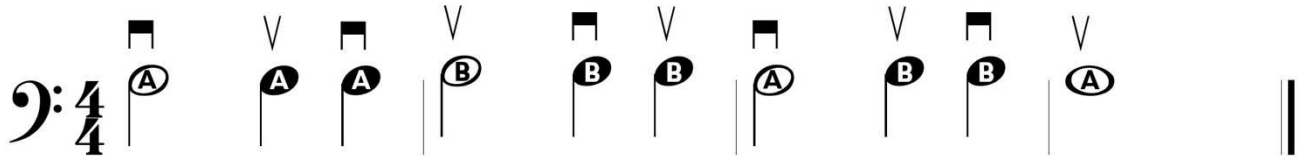
To play "B" on the A string, press the tip of your first finger down securely on the first stripe on the A string.



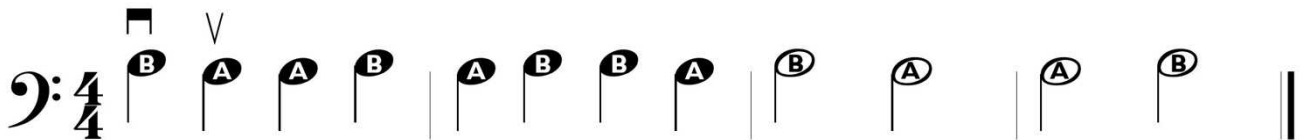
27. A to B



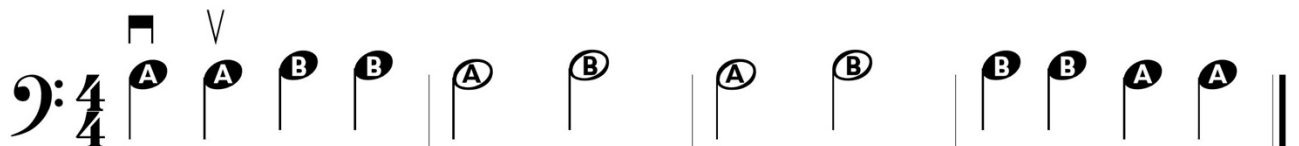
28. Smooth Sailin'



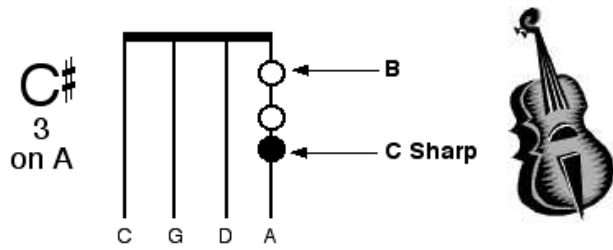
29. Back and Forth



30. Two Note Jive



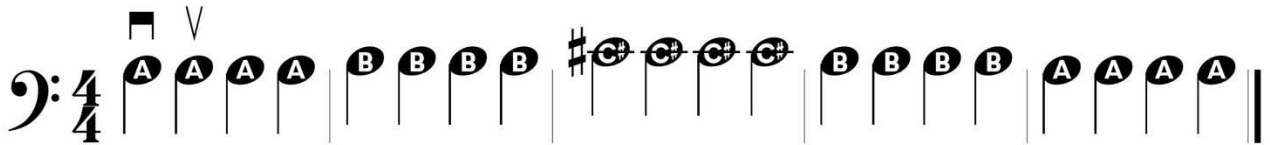
Lesson Six: C# on the A String



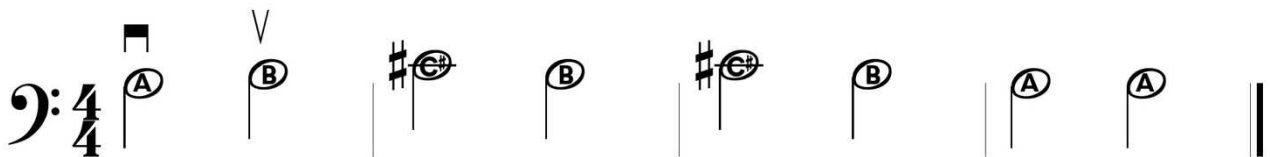
To play C-Sharp, press the tip of your **THIRD** finger on the second stripe on the A string.

****Reminder:** Keep your first finger on the first stripe and your second finger in between the first and second stripes.


31. Three Note Hill

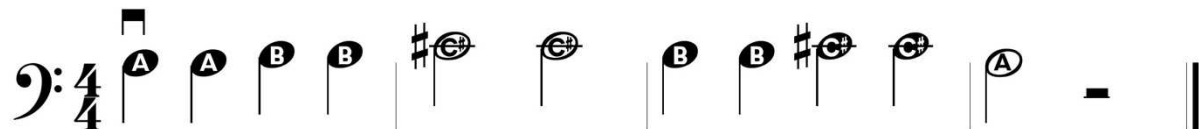


32. Up and Down




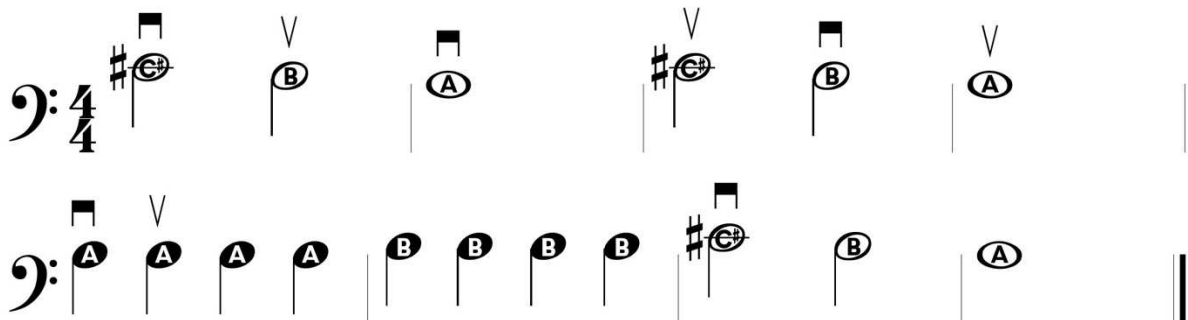
33. Fast and Slow

 = half rest (2 beats of silence)



34. Hot Cross Buns

 = whole note (receives 4 beats)

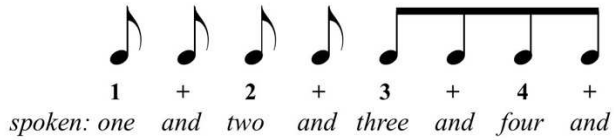


Eighth Note Rhythms

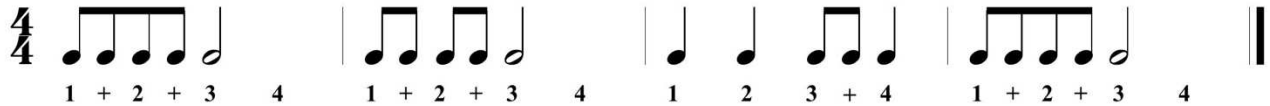
The rhythmic value of an **eighth notes** is one half of a beat. Eighth notes may be written with a **flag** or a **beam**. If an eighth note appears by itself, it will have a flag. If two or more eighth notes appear in a row, they will often be **beamed** together.



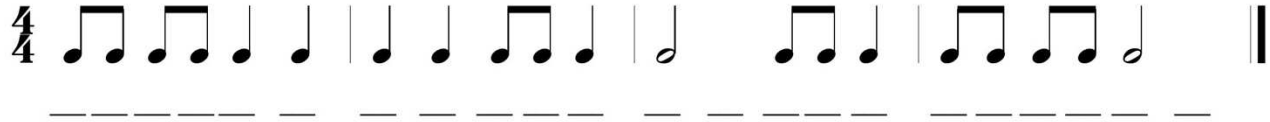
Use a plus sign (+) when writing the count for eighth notes.



1. Clap the rhythm while counting out loud.

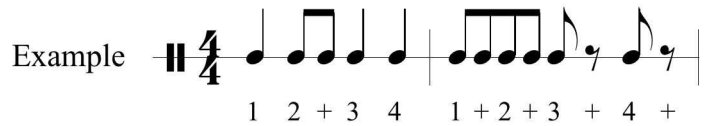


2. Write the count below the notes and then clap the rhythm while counting out loud.

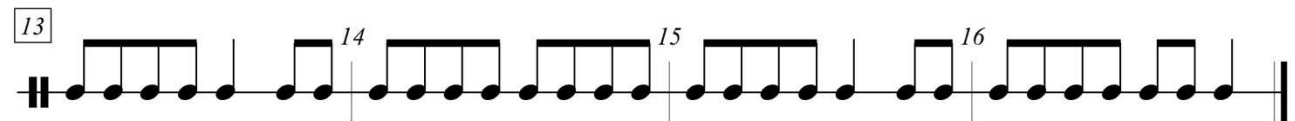
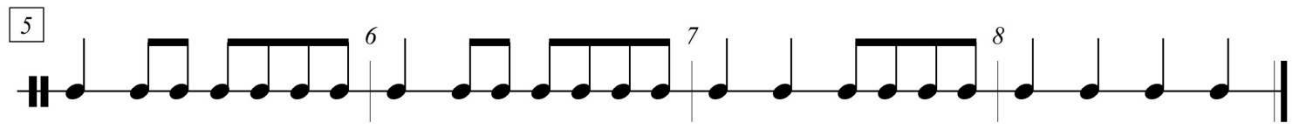
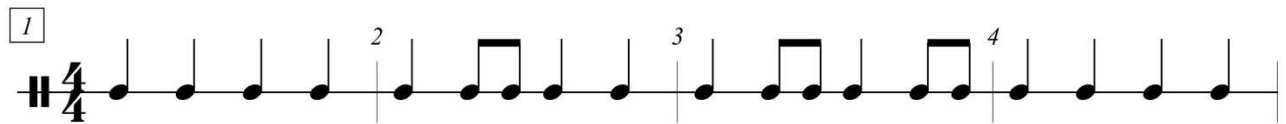



Eighth Note Clap and Count

Write the count below the notes and rests.



Clap the rhythms while counting out loud.



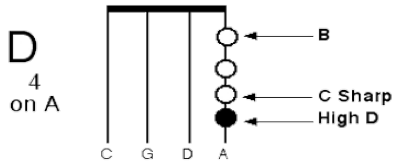
 = **Bow Lift**
 (lift the bow off the string and reset it at the frog)

37. Claire de Lune

38. Lune de Claire

39. The Reapers

Lesson 7: New Note "High D"



To play High D, press the tip of your fourth finger (pinkie) on the third stripe on the A string.

Reminder: Keep your first three fingers down on the first two stripes.

40. Going Up the A String

41. Going Down the A String

42. Shark Week

43. Bile Them Cabbage Down

|| = repeat sign

go back to beginning
and play again

44. A String Note Review

Match the note with the finger numbers

B

3 on A string

C#

4 on the A string

A

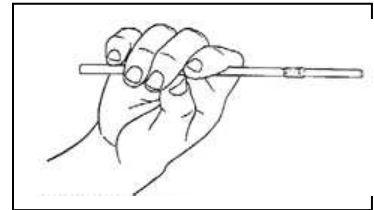
1 on the A string

D

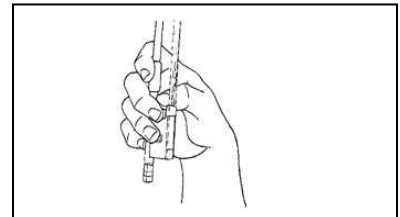
open A string

45. Place a number (1-5) in the blanks to put the 5 steps to a good bow grip in order.

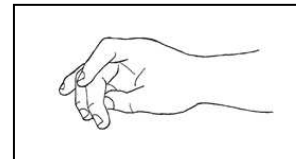
_____ **Thumb touches where frog meets the stick**



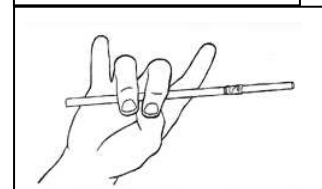
_____ **Wrap your fingers around the stick**



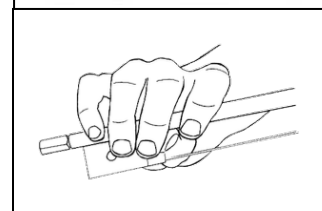
_____ **Check for bow hand circle**



_____ **Middle fingers curve over the bow stick**

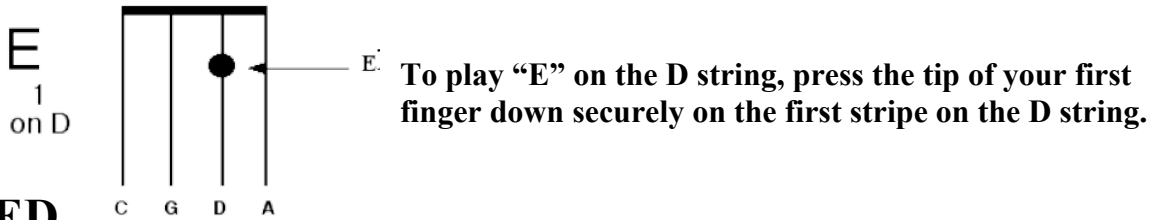


_____ **Little finger (pinkie) sits on the side of stick**



*****Lessons 5, 6, and 7 have been using the notes on the A-String.
All of Lessons 8 and 9 are on the D-String.**

Lesson 8: New Note "E" on the D String

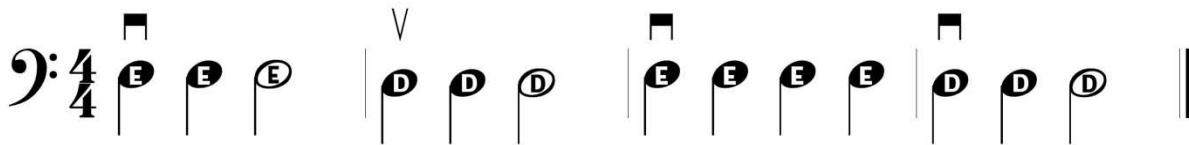


E
1
on D

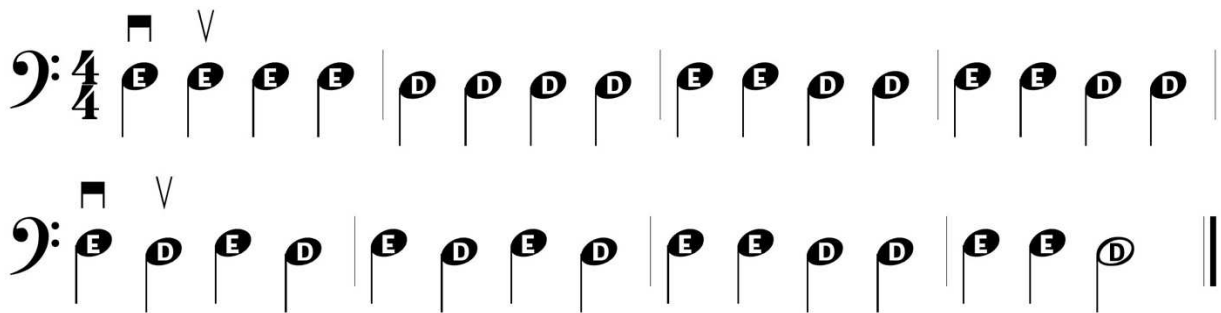
C G D A

E: To play "E" on the D string, press the tip of your first finger down securely on the first stripe on the D string.

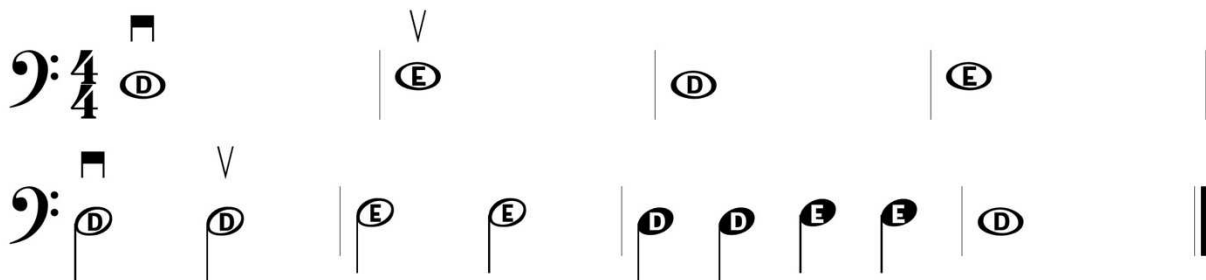
46. ED



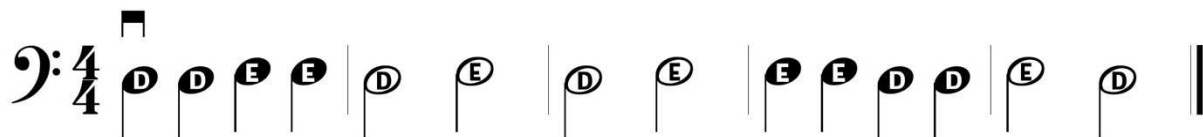
47. First Finger Workout



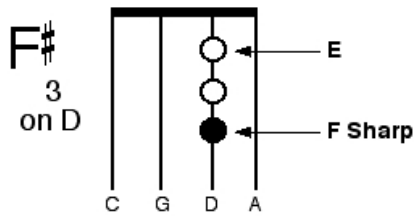
48. Accelerator



49. Two by Two



Lesson 9: F# on the D String



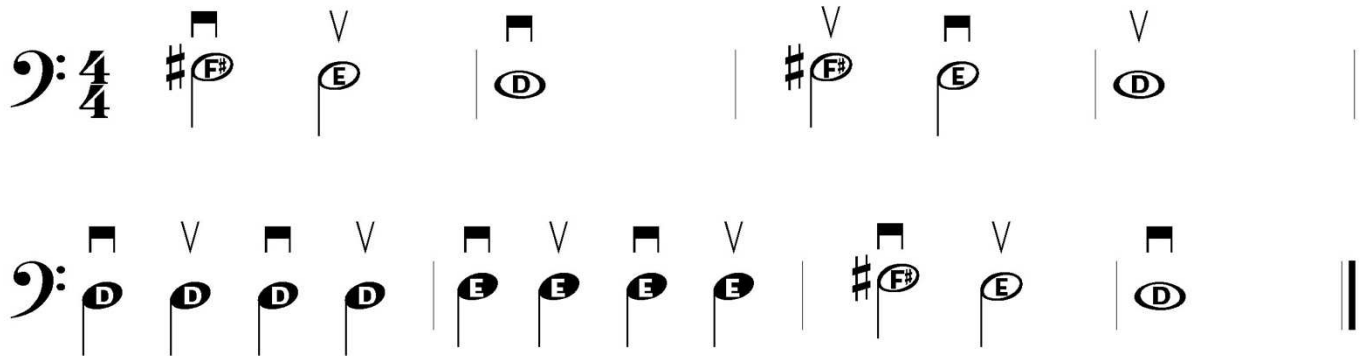
To play F-Sharp, press the tip of your third finger on the second stripe on the D string.

Reminder: Keep your first finger on the first stripe and your second finger in between the first and second stripes.

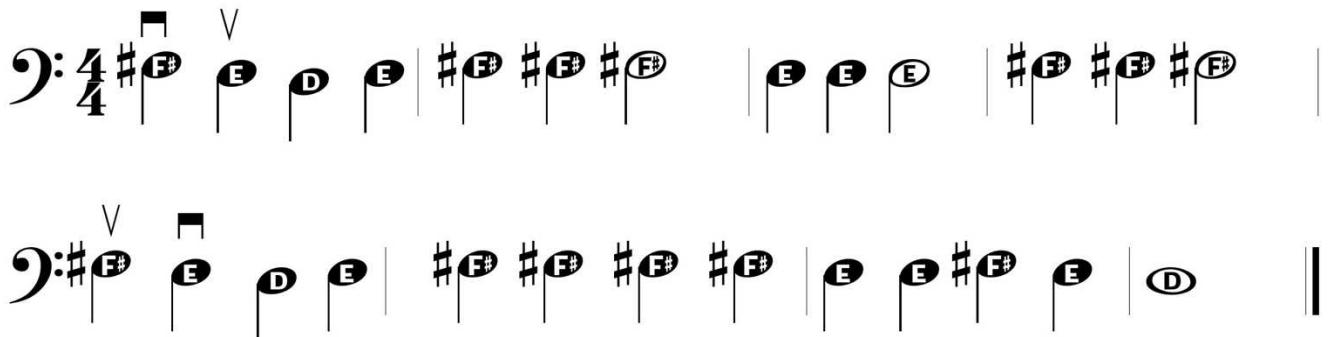
50. Up and Down



51. Hot Cross Buns on the D String



52. Mary Had a Little Lamb on the D String



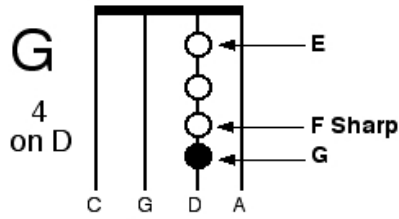
53. Mary Doubles on the D String

54. Claire de Lune on the D String

|| = Repeat Sign

Go back to the beginning
and play again

Lesson 10: G on the D String

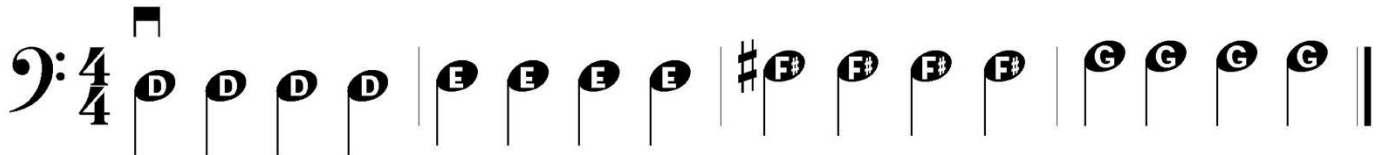


To play G, press the tip of your fourth finger (pinkie finger) on the third stripe.

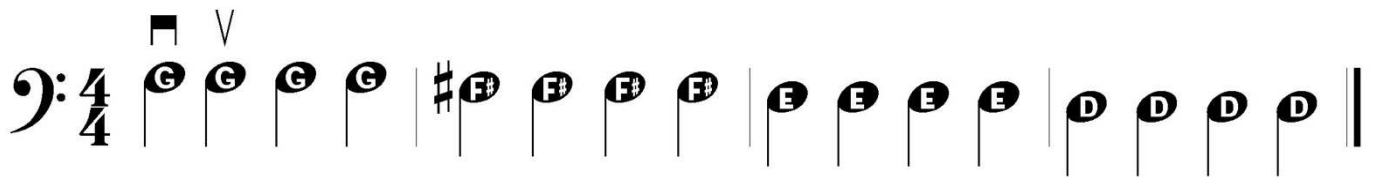
Keep your first three fingers down on the first two stripes on the D String.

KEEP ALL FINGERS DOWN

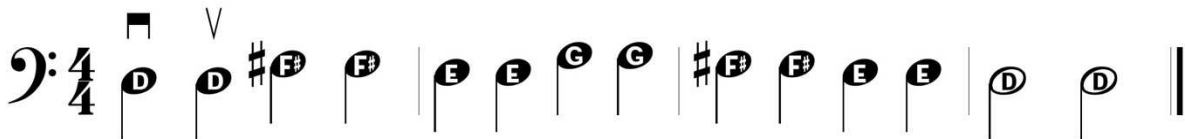
55. Up the D string



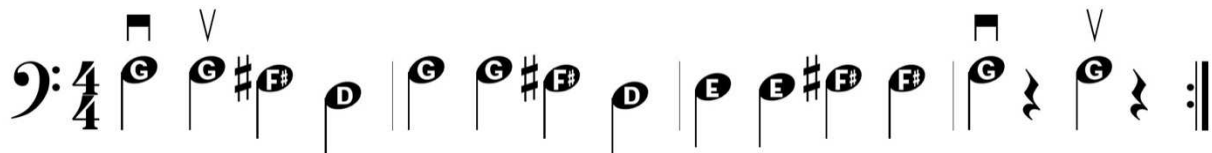
56. Down the D String



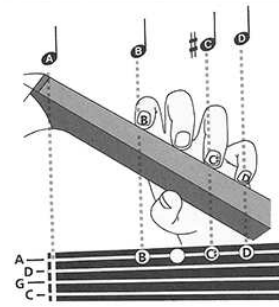
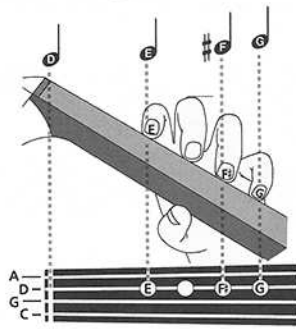
57. Skipping Along the D String



58. Jolly Fellows



Lesson 11: Crossing Strings



59. Crossing Over

60. Ascending the D Scale

61. Descending

347

62. D Major Scale Quadruples

63. D Major Scale Triples

64. D Major Scale Doubles

Bass clef, 4/4 time.
 Line 1: \square \vee
 D D E E | F# F# G G | A A B B | C# C# D D |
 Line 2:
 D D C# C# | B B A A | G G F# F# | E E D D ||

65. D Major Scale Singles

Bass clef, 4/4 time.
 \square \vee
 D E F# G | A B C# D | D C# B A | G F# E D ||

66. Note Review- Write the note names for all the notes you have learned so far

Name the Strings

1st finger
 3rd finger
 4th finger

✓ 67. Twinkle Twinkle Little Star

✓ 68. Twinkle (Variation)

69. Lightly Row



Bow Lift

Lift bow off of the string and reset at the frog.

70. Jingle Bells

71. Jolly Old St. Nick

Bass clef, 4/4 time signature. The notation consists of four staves of music. The first staff begins with a B note, followed by a B note with a V-shaped vibrato mark, then B, B, A, A, A, G, G, G, G, and a circled B. The second staff begins with E, E, E, E, D, D, G, F#, G, A, B, and a circled A. The third staff is identical to the first. The fourth staff begins with E, E, E, E, D, D, G, A, G, A, B, and a circled G.

72. Dreydl, Dreydl

Bass clef, 4/4 time signature. The notation consists of four staves of music. The first staff begins with an A note, followed by a circled A, a circled F# with a V-shaped vibrato mark, then A, F#, A, #F#, F#, A, A, G, #F#, E, and a circled E. The second staff begins with G, E, G, E, G, E, E, A, G, #F#, E, and a circled D. The third staff is identical to the first. The fourth staff is identical to the second.



✓ 73. French Folk Song

♩

♭ 3/4

D D D #C C C B #C D A.

G G G #F F F E E E D.

D E #F D E #F D E #F G.

E #F G E #F G E #F G A.

D #C B A G #F E D E D.

✓ 74. Tuneful Tune

✓ 74. Tuneful Tune
 Bass clef, 4/4 time, key of D major.
 Staff 1: C# (quarter), C (quarter), A (quarter), A (quarter), C# (quarter), C (quarter), C (quarter).
 Staff 2: C# (quarter), C (quarter), A (quarter), A (quarter), C# (quarter), C (quarter), C (quarter).
 Staff 3: B (quarter), B (quarter), B (quarter), B (quarter), B (quarter), B (quarter), D (quarter).
 Staff 4: B (quarter), B (quarter), B (quarter), B (quarter), A (quarter), A (quarter). Pluck!

✓ 75. Ode to Joy

✓ 75. Ode to Joy
 Bass clef, 4/4 time, key of D major.
 Staff 1: F# (quarter), F# (quarter), G (quarter), A (quarter), A (quarter), G (quarter), F# (quarter), E (quarter).
 Staff 2: F# (quarter), F# (quarter), G (quarter), A (quarter), A (quarter), G (quarter), F# (quarter), E (quarter).
 Staff 3: E (quarter), E (quarter), F# (quarter), D (quarter), E (quarter), F# (quarter), G (quarter), F# (quarter), D (quarter), E (quarter), F# (quarter), G (quarter), F# (quarter), E (quarter).
 Staff 4: F# (quarter), F# (quarter), G (quarter), A (quarter), A (quarter), G (quarter), F# (quarter), E (quarter), D (quarter), D (quarter), E (quarter), F# (quarter), E (quarter), D (quarter), D (quarter).

Honor 4th Grade String Songs

76. Mary on the A String

Musical notation for 'Mary on the A String' in 4/4 time. The piece is written in G major (one sharp) and features a melody primarily on the A string. The first staff begins with a treble clef and a 4/4 time signature. The notes are: G4 (quarter), B4 (quarter), A4 (quarter), B4 (quarter), G4 (quarter), G4 (quarter), G4 (quarter), B4 (quarter), B4 (quarter), B4 (quarter), G4 (quarter), G4 (quarter), G4 (quarter). The second staff continues the melody: G4 (quarter), B4 (quarter), A4 (quarter), B4 (quarter), G4 (quarter), G4 (quarter), G4 (quarter), G4 (quarter), B4 (quarter), B4 (quarter), G4 (quarter), B4 (quarter), A4 (quarter).

77. Mary Doubles- (1st Variation)

Musical notation for 'Mary Doubles- (1st Variation)' in 4/4 time. The piece is written in G major and features a melody primarily on the A string. The first staff begins with a treble clef and a 4/4 time signature. The notes are: G4 (quarter), G4 (quarter), B4 (quarter), B4 (quarter), A4 (quarter), A4 (quarter), B4 (quarter), B4 (quarter), G4 (quarter), G4 (quarter), G4 (quarter), G4 (quarter), G4 (quarter), G4 (quarter), G4 (quarter), G4 (quarter). The second staff continues the melody: B4 (quarter), B4 (quarter), B4 (quarter), B4 (quarter), B4 (quarter), B4 (quarter), B4 (quarter), B4 (quarter), G4 (quarter), G4 (quarter), G4 (quarter), G4 (quarter), G4 (quarter), G4 (quarter), G4 (quarter), G4 (quarter). The third staff continues the melody: G4 (quarter), G4 (quarter), B4 (quarter), B4 (quarter), A4 (quarter), A4 (quarter), B4 (quarter), B4 (quarter), G4 (quarter), G4 (quarter), G4 (quarter), G4 (quarter), G4 (quarter), G4 (quarter), G4 (quarter), G4 (quarter). The fourth staff continues the melody: B4 (quarter), B4 (quarter), B4 (quarter), B4 (quarter), G4 (quarter), G4 (quarter), B4 (quarter), B4 (quarter), A4 (quarter), A4 (quarter), A4 (quarter), A4 (quarter), A4 (quarter), A4 (quarter), A4 (quarter), A4 (quarter).

78. Twinkle Twinkle, Little Star

Musical notation for 'Twinkle Twinkle, Little Star' in 4/4 time. The piece is written in G major and features a melody primarily on the A string. The first staff begins with a treble clef and a 4/4 time signature. The notes are: D4 (quarter), D4 (quarter), A4 (quarter), A4 (quarter), B4 (quarter), B4 (quarter), A4 (quarter), G4 (quarter), G4 (quarter), F#4 (quarter), F#4 (quarter), E4 (quarter), E4 (quarter), D4 (quarter). The second staff continues the melody: A4 (quarter), A4 (quarter), G4 (quarter), G4 (quarter), F#4 (quarter), F#4 (quarter), E4 (quarter), A4 (quarter), A4 (quarter), G4 (quarter), G4 (quarter), F#4 (quarter), F#4 (quarter), E4 (quarter). The third staff continues the melody: D4 (quarter), D4 (quarter), A4 (quarter), A4 (quarter), B4 (quarter), B4 (quarter), A4 (quarter), G4 (quarter), G4 (quarter), F#4 (quarter), F#4 (quarter), E4 (quarter), E4 (quarter), D4 (quarter).

79. Twinkle Variation

79. Twinkle Variation

Staff 1: $\square \vee \square \vee \square \vee$
 $\text{D D D D D D} \text{ D} \mid \text{A A A A A A} \text{ A} \mid \text{B B B B B B} \text{ B} \mid \text{A A A A A A} \text{ A}$

Staff 2: $\text{G G G G G G} \text{ G} \mid \text{\#F F F F F F} \text{ F} \mid \text{E E E E E E} \text{ E} \mid \text{D D D D D D} \text{ D}$

Staff 3: $\text{A A A A A A} \text{ A} \mid \text{G G G G G G} \text{ G} \mid \text{\#F F F F F F} \text{ F} \mid \text{E E E E E E} \text{ E}$

Staff 4: $\text{A A A A A A} \text{ A} \mid \text{G G G G G G} \text{ G} \mid \text{\#F F F F F F} \text{ F} \mid \text{E E E E E E} \text{ E}$

17

Staff 5: $\square \vee \square \vee \square \vee$
 $\text{D D D D D D} \text{ D} \mid \text{A A A A A A} \text{ A} \mid \text{B B B B B B} \text{ B} \mid \text{A A A A A A} \text{ A}$

Staff 6: $\text{G G G G G G} \text{ G} \mid \text{\#F F F F F F} \text{ F} \mid \text{E E E E E E} \text{ E} \mid \text{D D D D D D} \text{ D}$

80. French Folk Song

80. French Folk Song

Staff 1: $\text{D D D} \mid \text{\#G G G} \mid \text{B G G} \mid \text{D A}$

Staff 2: $\text{G G G} \mid \text{\#F F F} \mid \text{E E E} \mid \text{D}$

Staff 3: $\text{D E \#F} \mid \text{D E \#F} \mid \text{D E \#F} \mid \text{G}$

Staff 4: $\text{E \#F G} \mid \text{E \#F G} \mid \text{E \#F G} \mid \text{A}$





Staff 5: $\text{D \#G B} \mid \text{A G \#F} \mid \text{E D E} \mid \text{D}$

81. Ode to Joy




82. Tuneful Tune

Some Basic Rhythmic Fundamentals








Note Values

Quarter Note		= one beat
Half Note		= two beats
Dotted Half Note		= three beats
Whole Note		= four beats

Rest Values

Quarter Rest		= one beat
Half Rest		= two beats
Whole Rest		= four beats

72. Quiz

1. A  _____ receives _____ beats.
2. A  _____ receives _____ beats.
3. A  _____ receives _____ beats.
4. A  _____ receives _____ beats.
5. A  _____ receives _____ beats.
6. A  _____ receives _____ beats.
7. A  _____ receives _____ beats.

Directions: Match each note to the number of beats it gets



1



2



3



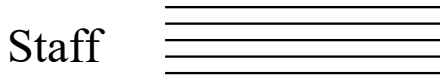
4

String Instrument Word Search



- | | | | | | |
|--------------|--------------|-------------|-------------|------------|----------------|
| alto clef | arco | barline | bass clef | bow | bow grip |
| bow lift | bridge | cello | chin rest | double bar | down bar |
| down bow | end button | fine tuners | fingerboard | frog | half note |
| half rest | measure | melody | neck | notes | pizzicato |
| quarter note | quarter rest | repeat sign | rhythm | rosin | scroll |
| sharp | shoulder pad | sound holes | tailpiece | tempo | time signature |
| treble clef | tuning pegs | up bow | viola | violin | whole note |
| whole rest | | | | | |

Reading Music



A music staff has five lines and four spaces.

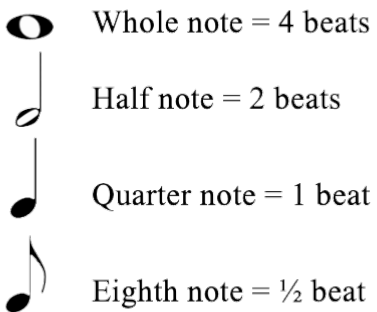


The bass clef is located at the beginning of every staff and tells us this music is for cello and other low pitched instruments.



The top number tells us how many beats are in each measure. The bottom number tells us which kind of note receives one beat.

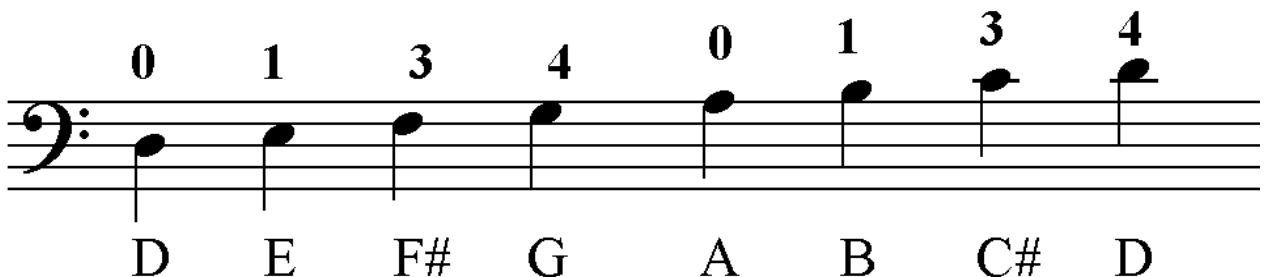
Rhythm Chart

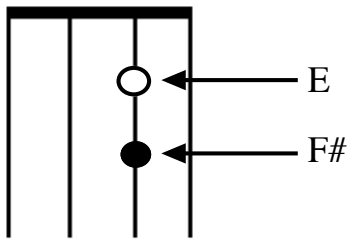


4 Steps to Success

1. Count and clap the rhythms.
2. Clap and sing the note names.
3. Sing note names and shadow bow.
4. Play.

Note Name and Fingering Reference Chart





F# on the D String

0 1 3

D E F#

F# is located on the fourth line.
 E is located on the third space.
 Open D is located on the third line.

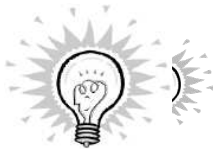


89. New Note F#

90. Let's Read F#

91. Climbing Up

92. Black and White



= A Quarter Rest is one beat of silence.

93. Resting

94. Walking Song

F# Tunes

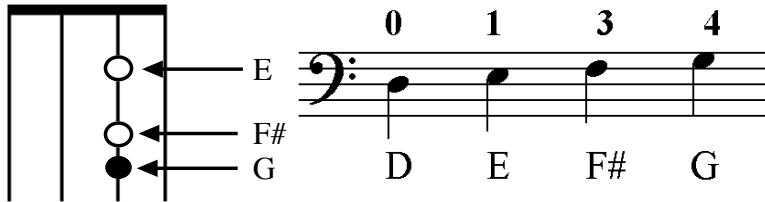


’ Bow lift Lift bow off of the string and reset at the frog.



95. The Reapers

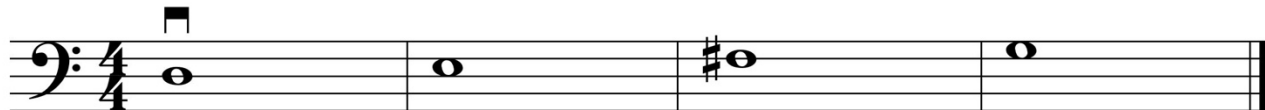
G on the D String



G is located on the fourth space.
 F# is located on the fourth line.
 E is located on the third space.
 Open D is located on the third line.



103. Three Plus G



104. Going Up and Down



105. Go, Go, Go



106. Grasshoppers



107. Norwegian Folk Song



108. Pizzicato March



G Tunes



KEY SIGNATURE

In this *key signature* you will play all F's as F#'s and all C's as C#'s. The *key signature* is always located at the beginning of each line. You will notice that there are no longer any sharps located in the songs.



109. Cockroaches



110. Speed Bump



111. Clown Dance (Play 3 Times)

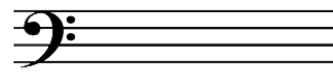
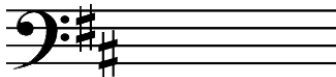
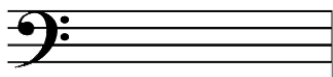


112. Write the correct note letter name under each note



1. _____ 2. _____ 3. _____ 4. _____ 5. _____ 6. _____ 7. _____

Draw four E quarter notes 2. Draw four F# quarter notes 3. Draw two G half notes



Crossing Strings: New Note A



Diagram showing string positions for E, F#, and G. The musical staff shows notes D, E, F#, G, A with fingerings 0, 1, 3, 4, 0.

A is located on the fifth line.
 G is located on the fourth space.
 F# is located on the fourth line.
 E is located on the third space.
 Open D is located on the third line.

113. More DNA

114. Crossing Over

115. Climbing to A

116. Merry Dance

A Tunes



117. Jingle Bells

Sheet music for "Jingle Bells" in bass clef, 4/4 time, key of D major. The music consists of four staves. The first staff begins with a treble clef and a 4/4 time signature. The melody is written in bass clef. The key signature has two sharps (F# and C#). The music features eighth and sixteenth notes, with some measures containing beamed eighth notes. There are several fermatas and dynamic markings (V) throughout the piece.

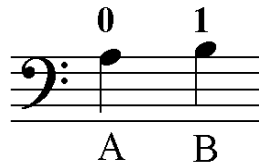
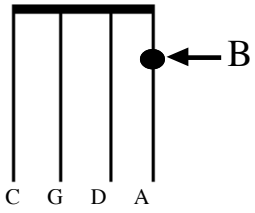
118. Skipping Around

Sheet music for "Skipping Around" in bass clef, 4/4 time, key of D major. The music consists of one staff. The melody is written in bass clef. The key signature has two sharps (F# and C#). The music features eighth and sixteenth notes, with some measures containing beamed eighth notes. There are several fermatas and dynamic markings (V) throughout the piece.

119. Lightly Row

Sheet music for "Lightly Row" in bass clef, 4/4 time, key of D major. The music consists of four staves. The melody is written in bass clef. The key signature has two sharps (F# and C#). The music features eighth and sixteenth notes, with some measures containing beamed eighth notes. There are several fermatas and dynamic markings (V) throughout the piece.

B on the A String

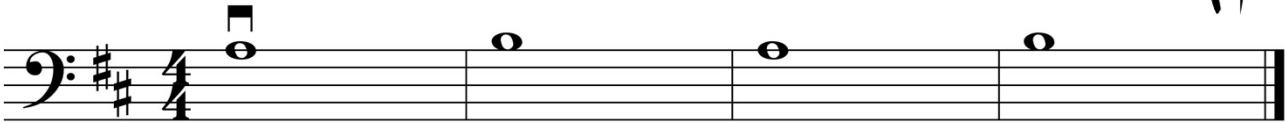


B is located on top of the music staff.

Open A is located on the fifth line.



120. A to B





121. Apples and Bananas



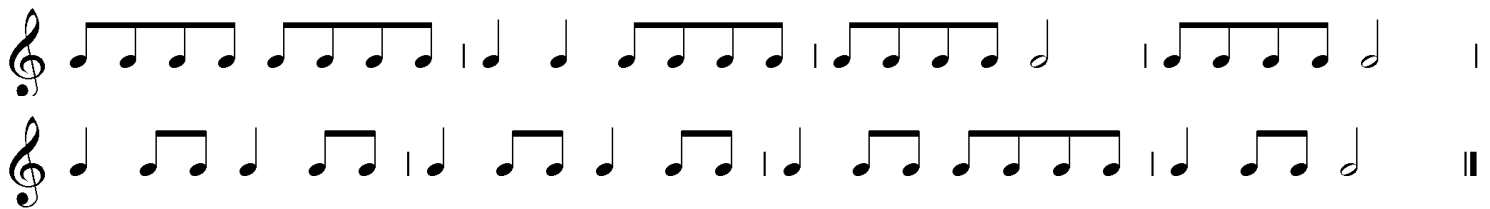
122. Old MacDonald



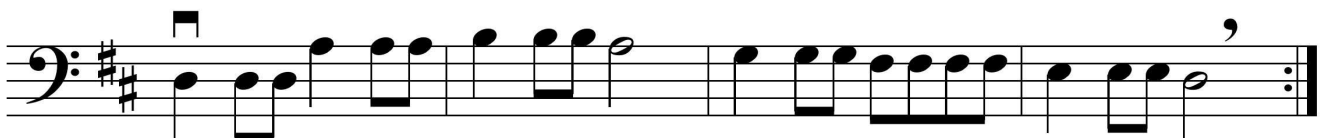
 = Each eighth note is half of a beat. Two eighth notes equal one beat.

Ex: 

4. Count and Clap



123. Baa Baa Black Sheep



C# on the A String



Diagram showing the A string on a violin. The string is labeled 'A'. Finger positions are indicated: 0 (Open A), 1 (B), and 3 (C#). A corresponding musical staff shows the notes on a bass clef staff: an open note on the fifth line (A), a note on the first ledger line (B), and a note on the first ledger line with a sharp sign (C#).

C# is located on the first ledger line.
B is located on top of the music staff.
Open A is located on the fifth line.

124. My A-B-C-'s

125. Apples, Bananas, and Cherries

126. Merry Go Round

127. Go Tell Aunt Rhodie

128. Name That Tune

D on the A String



D is located on top of the first ledger line.
 C# is located on the first ledger line.
 B is located on top of the music staff.
 Open A is located on the fifth line.

129. Reaching for High D

130. Donkey Song

131. Rockin' on the A String

132. D Major Scale and Arpeggio

D Tunes



A Repeat Sign tells you to repeat the music.

133. School March

Musical notation for 'School March' in bass clef, D major, 4/4 time. It consists of four staves of music. The melody is simple and rhythmic, starting with a quarter rest followed by quarter notes G, A, B, C, D, E, F, G, and ending with a half note G. There are repeat signs at the beginning and end of the piece.

134. Bohemian Folk Song

Musical notation for 'Bohemian Folk Song' in bass clef, D major, 4/4 time. It consists of two staves of music. The melody features eighth and quarter notes with accents. There are repeat signs at the beginning and end of the piece.

135. Scotland's Burning

Musical notation for 'Scotland's Burning' in bass clef, D major, 4/4 time. It consists of two staves of music. The melody is a simple sequence of quarter notes. There are first, second, and third endings marked with '1.', '2.', and '3.' respectively. There are repeat signs at the beginning and end of the piece.

136. Camptown Races

Musical score for 'Camptown Races' in bass clef, 4/4 time, key of D major. The score consists of four staves. The first staff begins with a treble clef and a 4/4 time signature. The melody is written in bass clef. The key signature has two sharps (F# and C#). The piece features a mix of eighth and quarter notes, with some measures containing accidentals (flats) and dynamic markings (V). The piece concludes with a double bar line.

137. Can Can

Musical score for 'Can Can' in bass clef, 4/4 time, key of D major. The score consists of four staves. The first staff begins with a treble clef and a 4/4 time signature. The melody is written in bass clef. The key signature has two sharps (F# and C#). The piece features a mix of eighth and quarter notes, with some measures containing accidentals (flats) and dynamic markings (V). The piece concludes with a double bar line.

138. Allegro

Musical score for exercise 138, Allegro. The score is written in bass clef with two sharps (F# and C#) and a 4/4 time signature. It consists of four staves. The first staff begins with a V-shaped dynamic marking above the first two notes. The music features a steady eighth-note pattern in the first two staves, followed by a more complex eighth-note sequence in the third and fourth staves. The piece concludes with a double bar line.

139. Song of the Wind

Musical score for exercise 139, Song of the Wind. The score is written in bass clef with two sharps (F# and C#) and a 2/4 time signature. It consists of three staves. The first staff begins with a V-shaped dynamic marking above the first two notes. The music features a steady eighth-note pattern in the first two staves, followed by a more complex eighth-note sequence in the third and fourth staves. The piece concludes with a double bar line.

Hoedown

CELLO

1



5



9



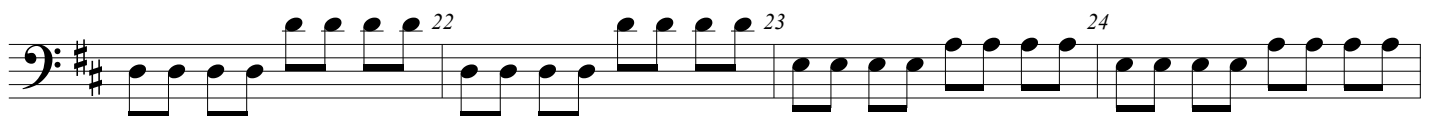
13



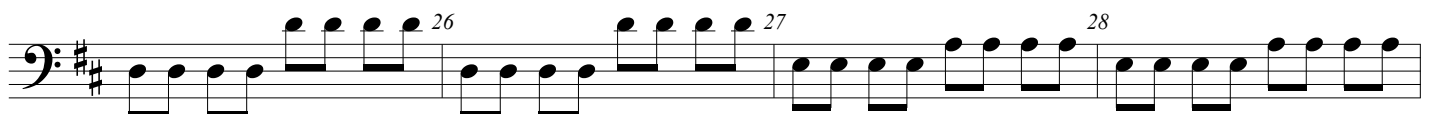
17



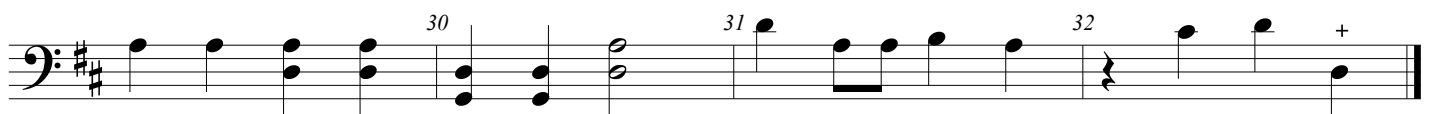
21



25

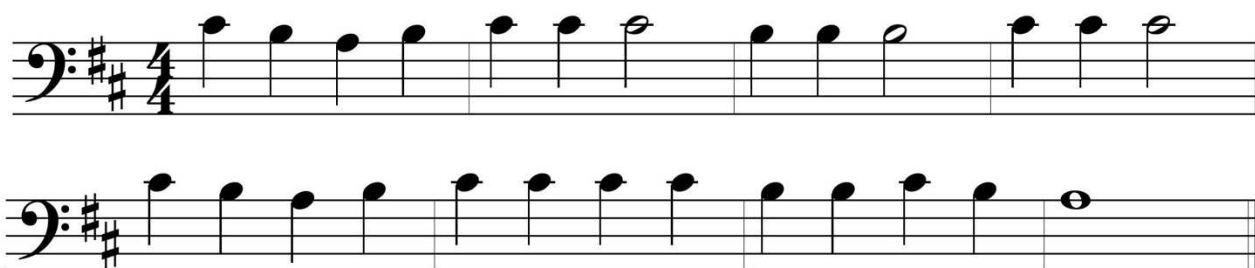


29



Honor Songs

Mary Had a Little Lamb



Twinkle Variation

Musical score for "Twinkle Variation" in bass clef, key of D major (two sharps), and 4/4 time. The piece consists of six staves of music. The first staff begins with a treble clef and a 4/4 time signature. The melody is a variation of the "Twinkle, Twinkle, Little Star" tune, featuring eighth-note patterns and slurs. The notation includes various rhythmic values such as eighth notes, quarter notes, and half notes, with some notes beamed together. The piece concludes with a double bar line.

French Folk Song

Musical score for "French Folk Song" in bass clef, key of D major (two sharps), and 3/4 time. The piece consists of five staves of music. The melody is a simple folk tune, primarily composed of quarter notes and half notes. The notation includes various rhythmic values such as quarter notes, half notes, and dotted half notes. The piece concludes with a double bar line.

Ode to Joy

Musical score for "Ode to Joy" in bass clef, 4/4 time, key of D major. The score consists of four staves of music. The first staff is a simple melody. The second and fourth staves have a 'V' above the first two notes. The third staff has 'V' above the first two notes and '□' above the next two notes, alternating in pairs.

Tuneful Tune

Musical score for "Tuneful Tune" in bass clef, 4/4 time, key of D major. The score consists of four staves of music. The first staff has '□' above the first note and 'V' above the second note. The second and third staves have 'V' above the first two notes. The fourth staff has 'V' above the first two notes and 'off (pluck)' above the last two notes.

Glossary of Terms

Accidentals (#, ♭, b): sharp, natural, and flat symbols for altering pitch.

Arco: to play using the bow.

Arpeggio: notes of a chord played separately.

Beat: the pulse of the music.

Bow lanes: point of contact of the bow, near the bridge or near the fingerboard.

Bow lift: lift the bow from the string and return to the frog in a circular motion.

Clef sign: located at the beginning of each line of music, the clef sign defines the letter names for the lines and spaces on the staff for your instrument.

Col legno: or more precisely col legno battuto (Italian for "hit with the wood"), is an instruction to strike the string with the stick of the bow.

Down bow: moving bow toward tip; pull.

Duet: music in two parts.

Fermata: symbol indicating to hold a note longer.

Key signature: identifies notes that are raised or lowered.

Ledger lines: extend the staff with small lines written above or below.

Legato: play with smooth bow strokes.

Measure: the space between barlines.

Octave: a pitch that is eight notes higher or lower and both pitches have the same letter name.

Pizzicato (pizz.): pluck the string with the index finger of the right hand.

Repeat sign: go back and play a section of music again.

Scale: a set of eight notes in ascending or descending order that begins and ends on the same letter.

Spiccato: bowing technique for string instruments in which the bow bounces lightly upon the string.

Staccato: stopped bow stroke.

Staff: 5 lines and 4 spaces, used for writing music.

Time signature: indicates how many beats are in a measure (top number) and what kind of note gets one beat (bottom number).

Tremolo: shake the bow back and forth rapidly as if trembling.

Up bow: moving bow toward frog; push.

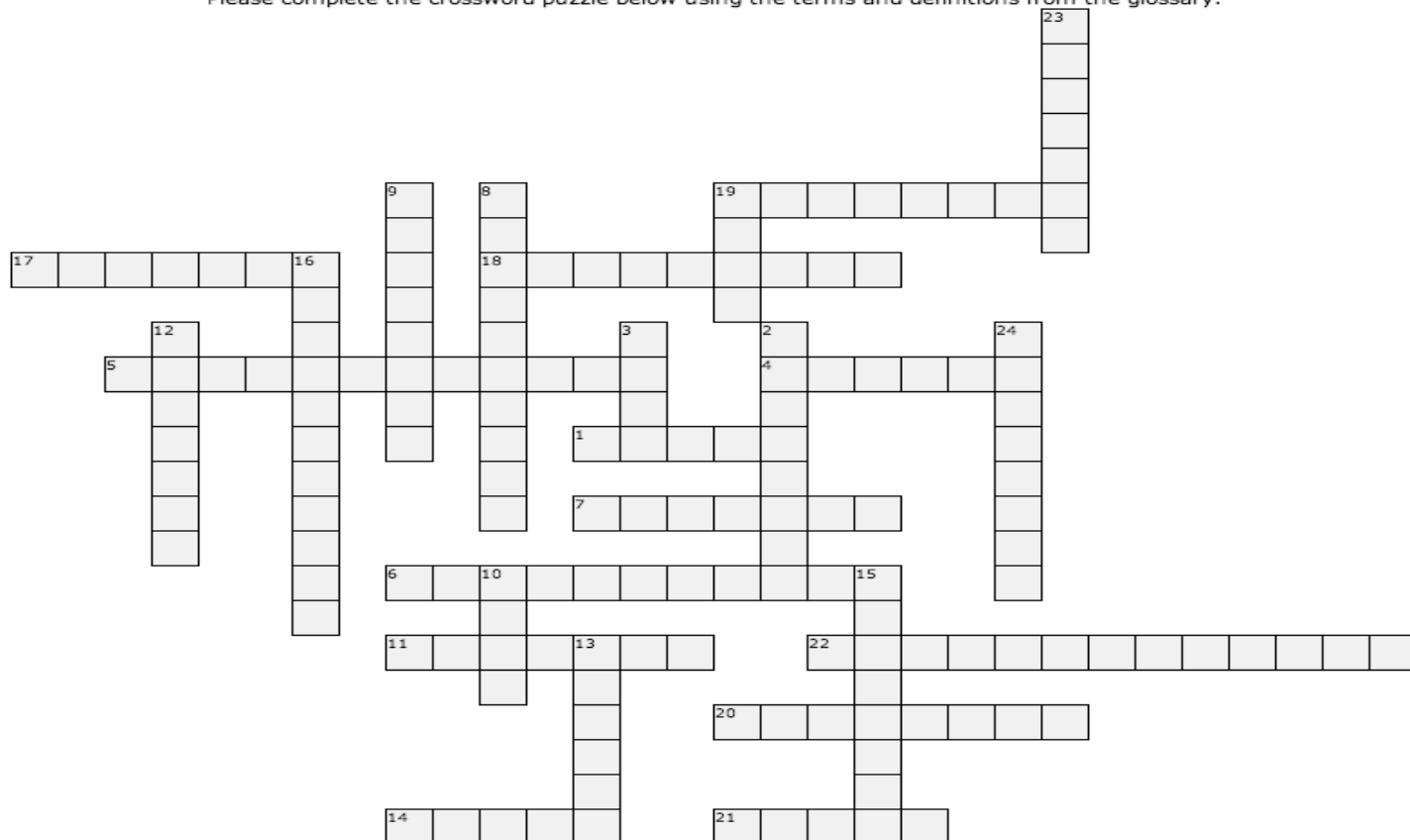
Note Name and Fingering Reference Chart

0
1
3
4
0
1
3
4

D
E
F#
G
A
B
C#
D

Glossary Crossword Puzzle

Please complete the crossword puzzle below using the terms and definitions from the glossary.



Across:

1. 5 lines and 4 spaces, used for writing music
4. play with smooth bow strokes
5. identifies notes that are raised or lowered (2 words)
6. extend the staff with small lines written above or below (2 words)
7. lift the bow from the string and return to the frog in a circular motion (2 words)
11. shake the bow back and forth rapidly as if trembling
14. a set of eight notes in ascending or descending order that begins and ends on the same letter
17. symbol indicating to hold a note longer
18. pluck the string with the index finger of the right hand
19. notes of a chord played separately
20. stopped bow stroke
21. moving the bow toward frog; push (2 words)
22. indicates how many beats are in a measure (top number) and what kind of note receives one beat (bottom number) (2 words)

Down:

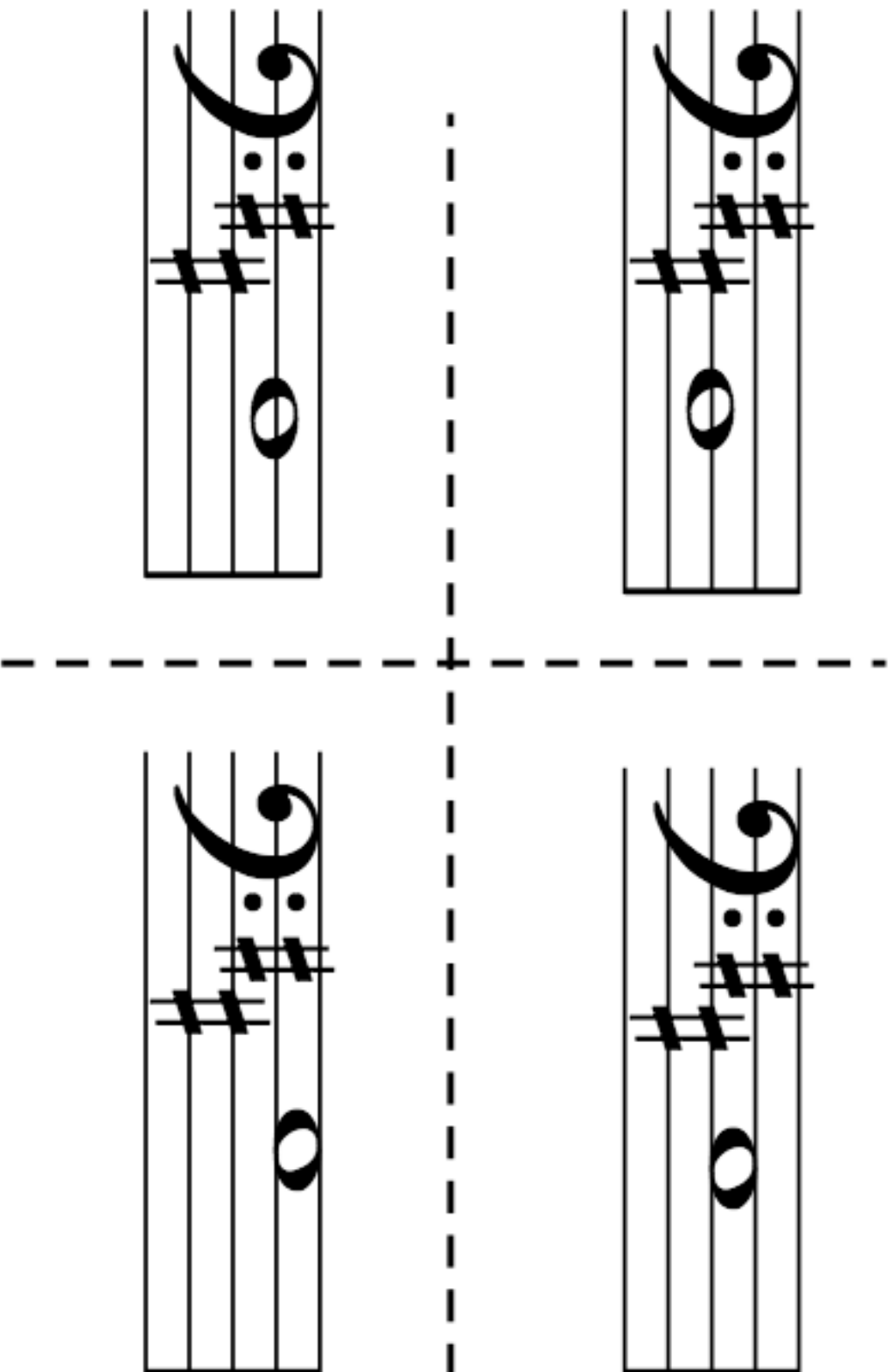
2. located at the beginning of each line of music, this symbol defines the letter names for the lines and spaces on the staff for your instrument (2 words)
3. the pulse of the music
8. go back and play a section of music again (2 words)
9. points of contact of the bow, near the bridge or near the fingerboard (2 words)
10. music in two parts
12. the space between barlines
13. a pitch that is eight notes higher or lower and both pitches have the same letter name
15. bowing technique for string instruments in which the bow bounces lightly upon the string.
16. sharp, natural, and flat symbols for altering pitch
19. to play using the bow
23. moving bow toward tip; pull (2 words)
24. an instruction to strike the string with the stick of the bow (2 words)

Complete the Story

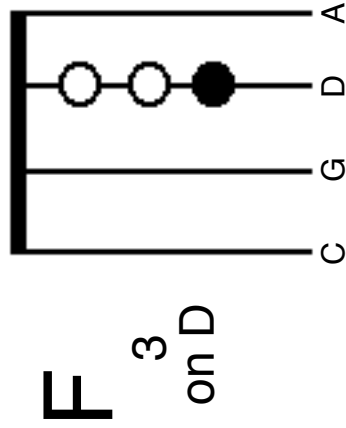
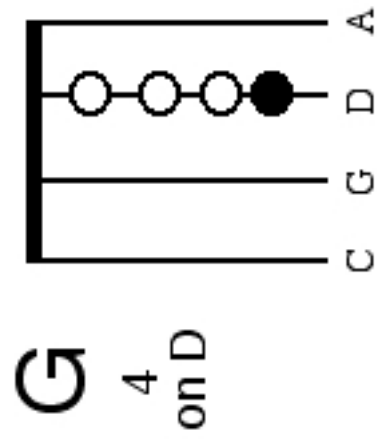
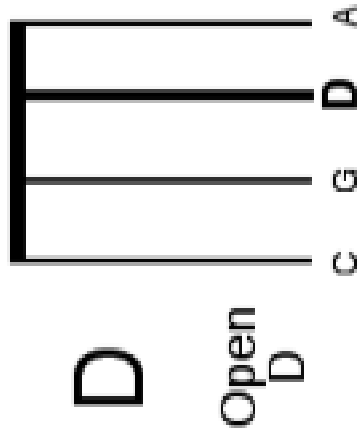
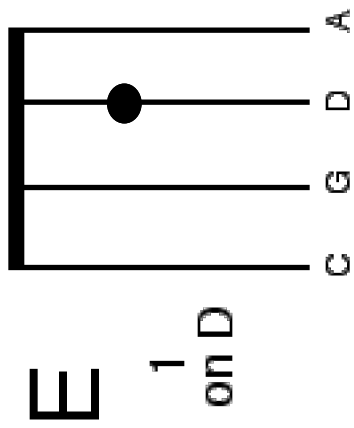
1 2 3 4 5 6 7
8 9 10 11 12
13 14 15 16 17

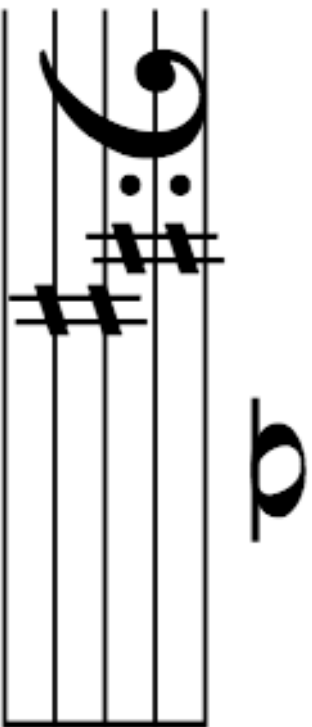
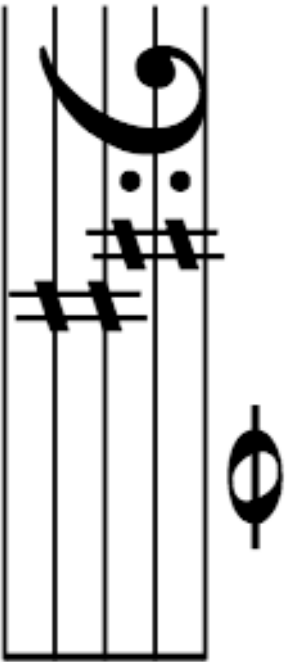
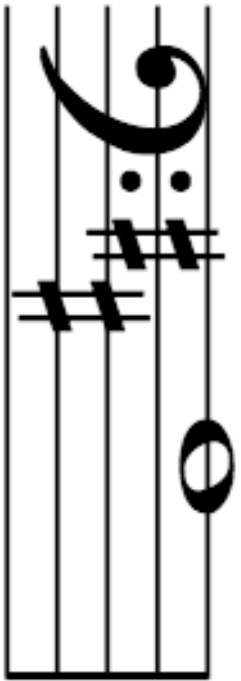
Each group of notes spells a word. Use the words to fill in the blanks in the following story. The number "1" group spells the word for the number "1" blank, the number "2" group spells the word for the number "2" blank, and so on.

_____ (1) and her mom and _____ (2) were moving into a new home at the _____ (3) of town. It was their last night in the old house. Everything was moved out except a _____ (4), some _____ (5), and a sleeping _____ (6). _____ (7) said, "It sure is _____ (8) around here." She _____ (9) to have a party that last night, but _____ (10) said it was a _____ (11) time to have friends over, and, too it was late. Mom _____ (12) that there was no way she could _____ (13) anyone, so a party was out. Just then the door flew open. There were Ruthie, _____ (14) and _____ (15) standing in the doorway, yelling "Surprise!" Each carried a _____ (16) filled with goodies. They also brought paper plates and cups. There was even a jug of lemon _____ (17). What started out as a dull evening turned out to be a fun time for all.



Flashcards for the D String Notes
Cut out and use to practice your note names.





Flashcards for the A String Notes
Cut out and use to practice your note names.

